

exposure

for complete calendar listings
see www.ceramicsmonthly.org



1



2



3

1 Mindy Horn's *Female Form*, 16 in. (41 cm) in height, porcelain, Mason stains, underglaze, fired in oxidation to cone 10. Photo: Ed Prescottano. 2 Ann Mallory's *Walking, With Sorrows*, 4 ft. (1.2 m) in height, high-fired ceramic, 2016. Photo: Rich Pomerantz. "Line and Volume: Ceramics by Mindy Horn and Ann Mallory," at Mattatuck Museum (www.mattmuseum.org) in Waterbury, Connecticut, through March 12. 3 Matt Towers' dish set, porcelain. "Matt Towers, Nathan Carris Carnes, and Matt Dercole," at Wesleyan Potters Gallery (www.wesleyanpotters.com) in Middletown, Connecticut, February 8–March 12.



4



5



6



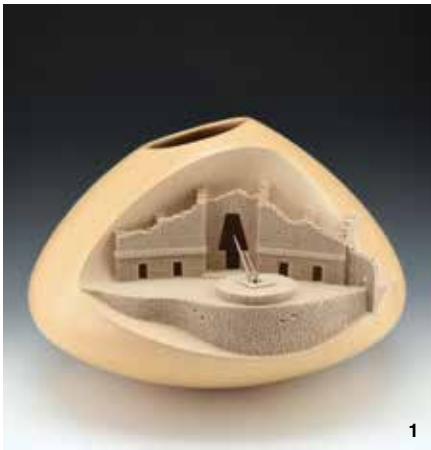
7

4 Denise Woodward-Detrich's orchid planter, 18 in. (46 cm) in length, white stoneware, salt fired, 2014. "Nature: Surface, Form, Content," at the Clay Studio of Missoula (www.theclaystudioofmissoula.org) in Missoula, Montana, February 3–24. 5 Megan Mitchell's plate, 12 in. (30 cm) in diameter, porcelain, lithographic transfer, 2016. 6 Elizabeth Pechacek's *Split Obelisk*, 17¼ in. (44 cm) in height, stoneware, luster, metal, 2016. Photo: Louisa Podlich. 7 David Swenson's bowl, 8 in. (20 cm) in diameter, stoneware, stain, glaze, 2016. 8 Amanda Dobbatz' flower brick vase, 11 in. (28 cm) in length, earthenware, slip, stain, underglaze, glaze, borax wash, 2016. "Three Jerome Artists and Fogelberg, Red Wing, and Anonymous Potter Studio Fellowship Artists," at Northern Clay Center (www.northernclaycenter.org) in Minneapolis, Minnesota, through February 26.



8

exposure



1



2



3



4



5

1 Al Qöyawayma's *Uxmal: Governor's Palace*, 10 in. (25 cm) in height, native clay, 2016. 2 Autumn Borts-Medlock's *Parrot*, 5 in. (13 cm) in height, native clay, 2016. 3 Les Namingha's *Zig-Zag*, 10 in. (25 cm) in diameter, native clay, acrylic, 2016. "Twenty Years of Excellence in Native Clay," at King Galleries (www.kinggalleries.com) in Scottsdale, Arizona, through February 2. 4 Kenji Uranishi's *Dome*, 14 in. (36 cm) in diameter, porcelain, 2016. 5 Roderick Bamford's *Sonic Loop Green*, 15 in. (38 cm) in height, porcelain, 2009. Photo: Helene Rosanove. "Scape," at JamFactory (www.jamfactory.com.au) in Adelaide, South Australia, February 16–April 23. 6 Jami Porter Lara's *LDS-MHB-GSBR-0416CE-01*, 12½ in. (32 cm) in height, pit-fired clay, 2016. Courtesy of Ona Porter and Miriam Rand. 7 Jami Porter Lara's *LDS-MHB-LPBR-0416CE-01*, 9 in. (23 cm) in height, pit-fired clay, 2016. Courtesy of Emilie Porter-Rand and Marc Basiliere. 6, 7 Photos: Geistlight Photography. "Border Crossing," at National Museum of Women in the Arts (www.nmwa.org) in Washington, DC, February 17–May 14.



6



7

GREAT MATERIALS
inspire
GREAT ART



TROMPE L'OEIL CERAMICS BY
TIM KOWALCZYK USING **AMACO**
VELVET UNDERGLAZES AVAILABLE AT

COMPANION
GALLERY

FIND VELVET UNDERGLAZES AND MORE AT
www.amaco.com

exposure



1



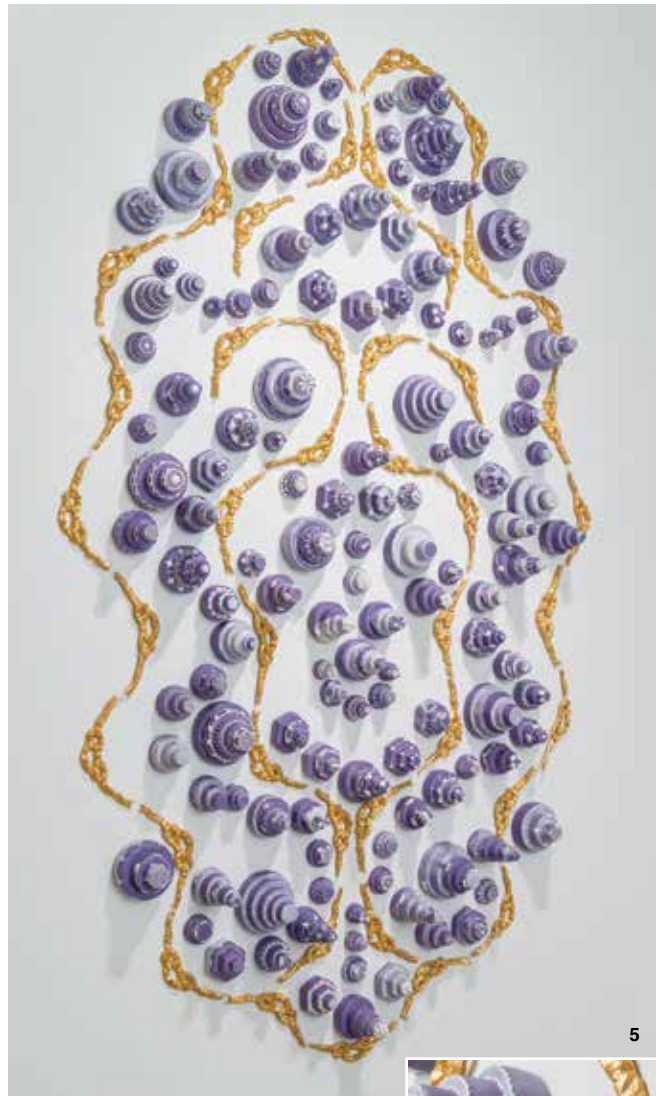
2



3



4



5



6

1 Tanya Gomez's *A Day* (backdrop), 16 ft. (5 m) in height, watercolor backdrop. 2 Tanya Gomez's *A Day*, to 14½ in. (37 cm) in height, wheel-thrown porcelain, fired in reduction and oxidation. 1, 2 Photos: Jonathan Bassett. "Collect 2017," at Saatchi Gallery (www.saatchigallery.com) in London, England, February 2–6. 3 Vanessa Norris' *Fuck Your Expectations*, 6 in. (15 cm) in height, porcelain, underglaze, slip, fired to cone 6 in an electric kiln, 2016. "An Ode to the Shirts and Socks That Once Called My Closet Home," at Dubsea Coffee (www.dubseacoffee.com) in Seattle, Washington, through March 1. 4 Eunika Rogers' *One Day I Looked in the Mirror*, 36 in. (92 cm) in height, clay, charcoal, canvas, encaustic finish, 2016. "Clay as Paint," at Kamruz Gallery (www.kamruz.com) in Telluride, Colorado, through February 28. 5, 6 Misty Gamble's *Forevermore*, 7 ft. (2.1 m) in height, ceramic, flocking, Ralph Lauren–brand gold metallic paint, 2016. Photos: E.G. Schempf. "Decade: Selected Works from 2006–16," at Leedy-Vouklos Art Center (www.leedy-vouklos.com) in Kansas City, Missouri, through April 1.

Spectrum Glazes®

Continuing to lead the way



Including ten new additions, Spectrum Glazes now has thirty outstanding Raku Glazes to choose from. From the brightest colors to the wildest reactions, there's a tantalizing option for any palette or project.

PH: (800) 970-1970
FAX: (905) 695-8354
www.spectrumglazes.com
info@spectrumglazes.com

exposure



1



2



3



4

1 Estela Hussong's untitled, 11 in. (28 cm) in height, ceramic, glaze, high fired. Photo: Cecilia Rodriguez. "Drawings in Time," at Tijuana Cultural Center (www.cecut.gob.mx) in Tijuana, Baja California, Mexico, through February 28. 2 Lori Katz's untitled, 9¼ in. (23 cm) in height. 3 Hideaki Miyamura's tall vase, 18 in. (46 cm) in height. 4 Lana Heckendorn's platter, 12 in. (30 cm) in diameter. "The American Craft Show in Baltimore," at Baltimore Convention Center (craftcouncil.org/baltimore) in Baltimore, Maryland, February 24–26. 5 Laura Gilpin's *Maria Martinez Making Pottery*, 14½ in. (37 cm) in length, gelatin silver print, 1959. Copyright 1979 Amon Carter Museum of American Art, Fort Worth, Texas. 6 Maria Martinez and Popovi Da's polychrome olla, 10½ in. (27 cm) in diameter, polychrome pottery, 1966. 5, 6 Courtesy of the Eugene B. Adkins Collection at Philbrook Museum of Art, Tulsa and Fred Jones Jr. Museum of Art, University of Oklahoma, Norman. "New Ground: The Southwest of Maria Martinez and Laura Gilpin," at National Museum of Women in the Arts (www.nmwa.org) in Washington, DC, through May 14.



5



6